



REMEDIAL CRACK-STITCHING SYSTEM

A two component system consisting of stainless steel Suretwist Bar and SureGrout.



Applications:

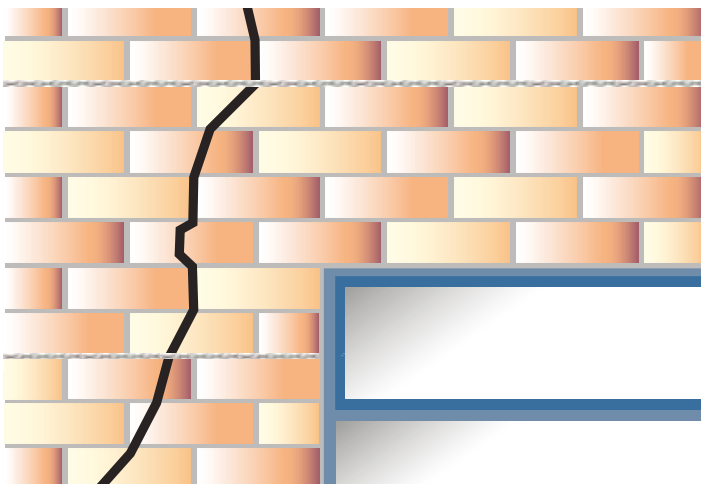
- A retro-reinforcement of bedjoint masonry
- A method of reconnecting cracked masonry

Benefits:

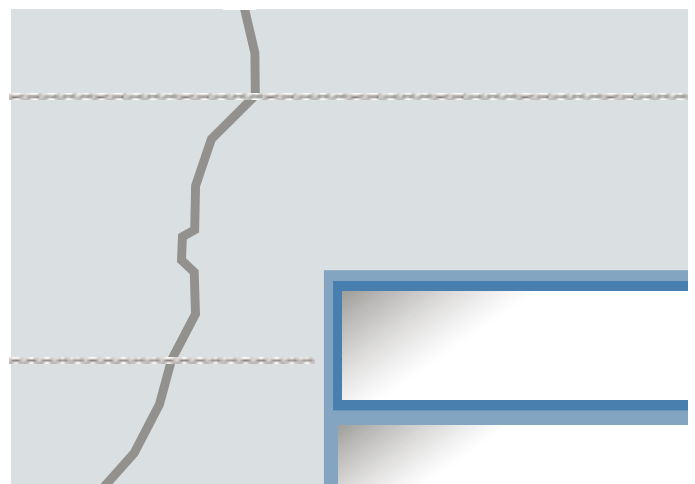
- SureTwist bar manufactured from 304 austenitic stainless steel, (316 available upon request)
- Non-disruptive repair method
- Cost effective and more stable than other repair systems
- SureTwist bars and SureGrout provide excellent bonding characteristics within the masonry
- SureTwist Bars have a superb combination of axial strength and flexibility
- Absorbs further localised stress
- Minimises the likelihood of further cracking
- Eliminates the need to rebuild a wall
- Permanent repair
- A fast, cost effective and economical solution
- No special skills required for installation

Range: SureTwist Bar

- 4.5mm - 6mm - 7mm - TC8mm - 6mm - TC9mm - 10mm x 1m-10m.
- SureGrout – 1.5 Litre, 3 Litre and 6 Litre Tubs available.



Crack-stitching a conventional brick wall using SureTwist Bar.



Crack-stitching rendered or plastered wall using SureTwist Bar.

CONSTRUCTION PRODUCTS SOLUTIONS INTERNATIONAL LTD.

Unit 3, Haslemere Industrial Estate, Pig Lane, Bishop's Stortford, Hertfordshire. CM23 3HG. United Kingdom.
Tel: +44(0)1279 505 514 - Fax: +44(0)1279 755190 - e mail: info@surecps-group.com - www.surecps-group.com
Company Reg. 6969591 VAT Reg. GB 824 4246 40



Please always wear the appropriate safety and protective clothing when installing fixing and anchor products. Always observe the necessary Health & Safety guidelines.

© All text copyright. Above information is given as guidance only and should always be verified by a suitable engineer.

The above information is given in good faith, and may be subject to alteration at any time without prior notification.

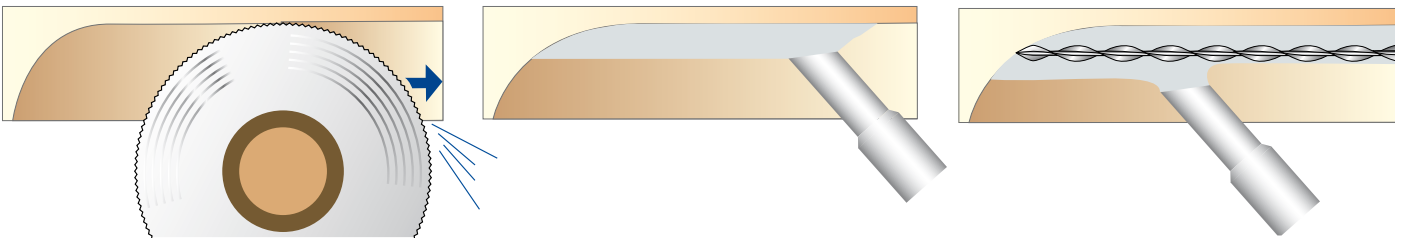


REMEDIAL CRACK-STITCHING SYSTEM

Two component system consisting of SureTwist Bar and SureGrout.

INSTALLATION CHARACTERISTICS			
WALL THICKNESS AND APPLICATION		SLOT DEPTH	DEPTH OF BAR
102mm wall	Crack Stitch	30 - 35mm	20mm
215mm wall	Crack Stitch	40 - 45mm	30mm

Vertical spacing every 4 to 6 brick courses. (300 – 450mm)
Please contact the CPSI technical department for advice.



1. Using suitable chasing equipment, cut horizontal slots into the masonry to the required width, depth and length. Clean out thoroughly with clean water.

2. Apply continuous bead of SureGrout into slot with applicator.

3. Insert length of 6mm SureTwist Bar and push into grout. Apply a further bead of SureGrout allowing enough room in slot to re-point with SureStain Colour Matching Mortar.



Chasing the Wall



Injecting the bead of grout



Laying in the bar



Push the bar into the grout and then inject another bead of grout

Installation Tools & Equipment: Note:

- ▣ Suitable Chasing tool
 - ▣ PPE Clothing and protection
 - ▣ Crack-stitching pointing gun and nozzle
 - ▣ Mixing paddle and finger trowel
 - ▣ Fill the crack with SureBond TE Resin and make good with SureBond Colour-Pointing Mortar
1. Bar to extend 500mm beyond the end of any opening or crack.
 2. Where cracks are within 500mm of corners or reveals bar is to be bent and bonded around the corner to recommended distance.
 3. When joining SureTwist Bar, ensure that it is overlapped by at least 500mm.
 4. Crack-stitching cannot cure the cause of the crack. Crack-stitching can only stabilise the symptoms of the cause.
 5. Always seek the advice of a structural engineer before undertaking any structural repair.

CONSTRUCTION PRODUCTS SOLUTIONS INTERNATIONAL LTD.

Unit 3, Haslemere Industrial Estate, Pig Lane, Bishop's Stortford, Hertfordshire. CM23 3HG. United Kingdom.
Tel: +44(0)1279 505 514 - Fax: +44(0)1279 755190 - e mail: info@surecps-group.com - www.surecps-group.com
Company Reg. 6969591 VAT Reg. GB 824 4246 40



Please always wear the appropriate safety and protective clothing when installing fixing and anchor products. Always observe the necessary Health & Safety guidelines.

© All text copyright. Above information is given as guidance only and should always be verified by a suitable engineer.

The above information is given in good faith, and may be subject to alteration at any time without prior notification.