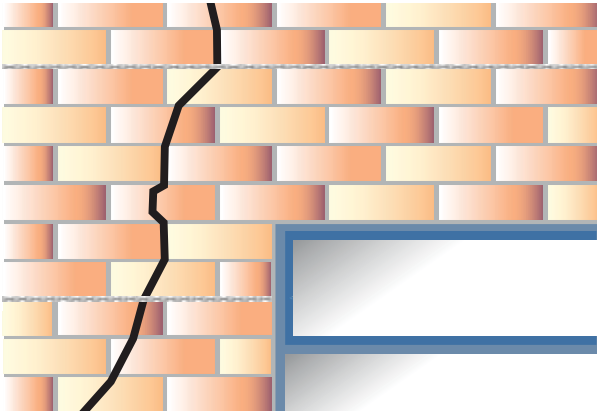


REMEDIAL REPAIR SOLUTIONS SURETWIST CRACK-STITCHING SYSTEM

The only fully certified helical repair solution available

A two component system consisting of stainless steel SureTwist Bar and SureGrout



Crack-stitching a conventional brick wall using SureTwist Bar and SureGrout.

Applications:

- ▢ A retro-reinforcement of bedjoint masonry
- ▢ A method of reconnecting cracked masonry

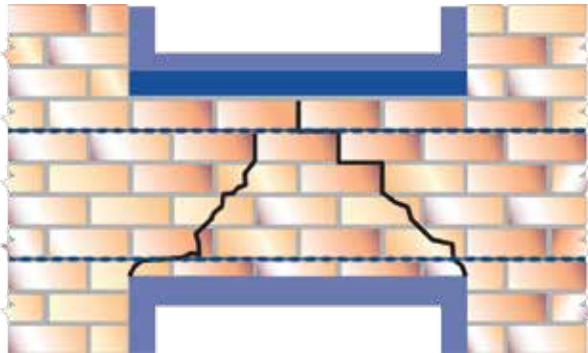
Benefits:

- ▢ SureTwist bar manufactured from 304 austenitic stainless steel, (316 available upon request)
- ▢ Non-disruptive repair method
- ▢ Cost effective and more stable than other repair systems absorbing local stresses.
- ▢ SureTwist Bars have a superb combination of axial strength and flexibility
- ▢ No special skills required for installation.

SURETWIST SUREBEAM SYSTEM

The only fully certified helical repair solution available

A two component system consisting of stainless steel SureTwist Bar and SureGrout



Creating a structural lintel between two windows using SureTwist Bar and SureGrout

Applications:

- ▢ Re-introduce a structure's integral and load bearing capabilities
- ▢ A method of reconnecting cracked masonry

Benefits:

- ▢ SureTwist bar manufactured from 304 austenitic stainless steel, (316 available upon request)
- ▢ Non-disruptive repair method
- ▢ Cost effective and more stable than other repair systems reintroducing the structural integrity of failed masonry.
- ▢ Permanent repair.

Testing:

CE LOK 1118/A/08, ITB KATOWICE
CE 0908-BPR-SN.072.01.M-11

IFBT

Deutsches Institut für Bautechnik

DIBt

U

LUCIDEON

An Independent Testing Centre

University of Waterloo Ontario Canada
Bath University.

Pennsylvania State University USA.

Imperial College London.

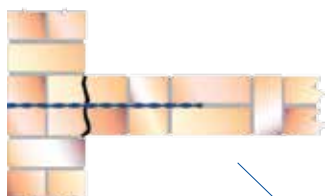
Ceram Building Technology.



EN ISO 6892-1:2001
EN 845-1:2003
EN 846-5:2000
EN 846-7:2000
EN 998-2:2004

Approvals and test centres that SureTwist Bar and Suregrout have been tested at since 1998.

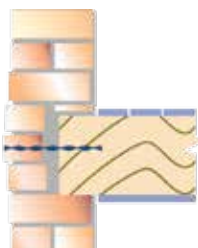
Reconnecting party walls
(see grout tie leaflet)



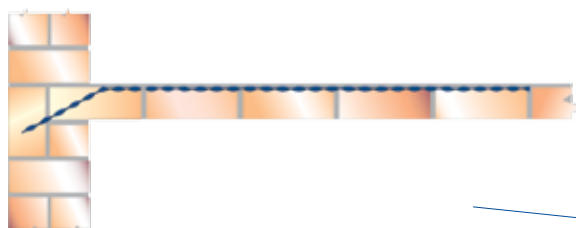
Repairing separated masonry (see
mechanical wall ties or grout tie leaflet)



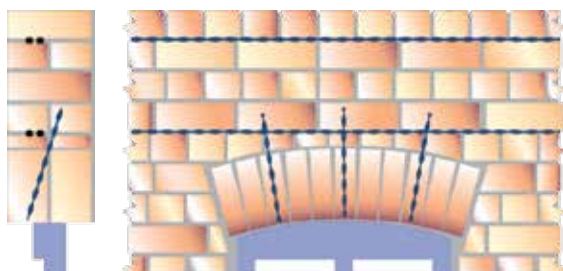
Stabalising bowed walls into
joist ends (see lateral restraint
tie leaflet)



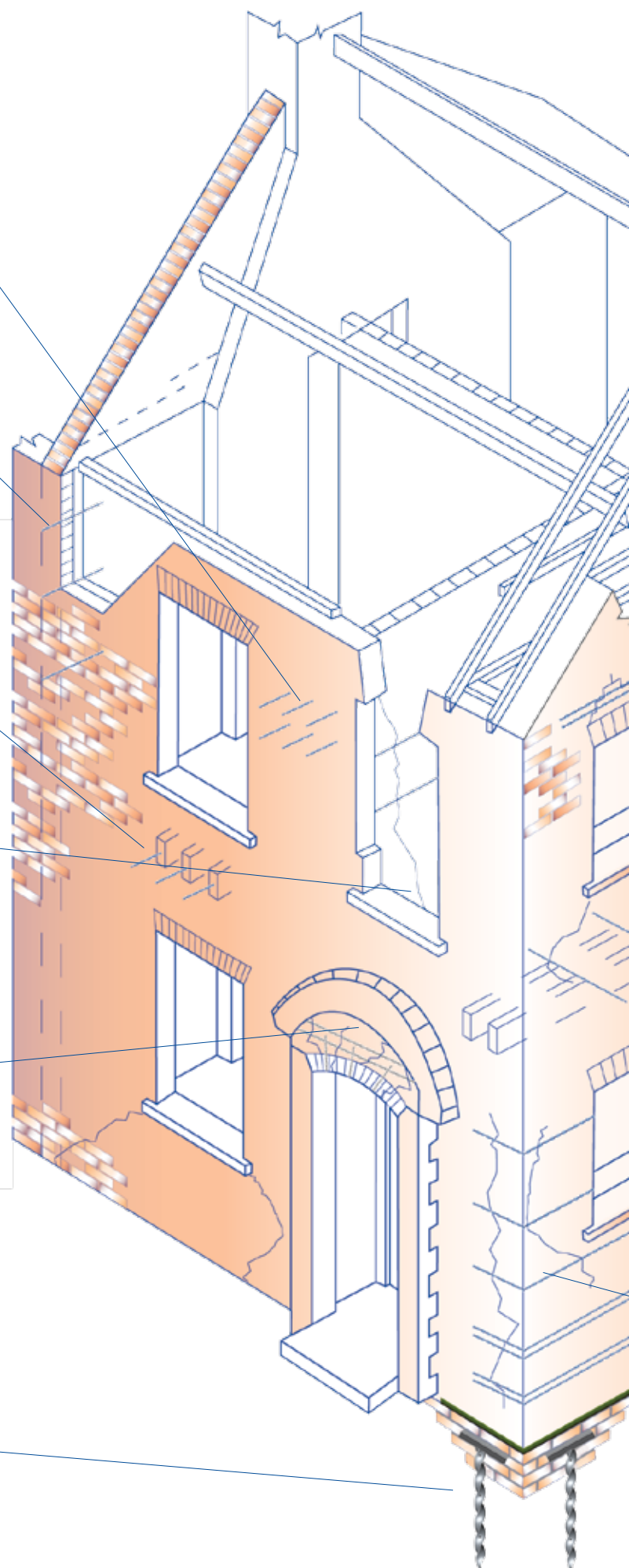
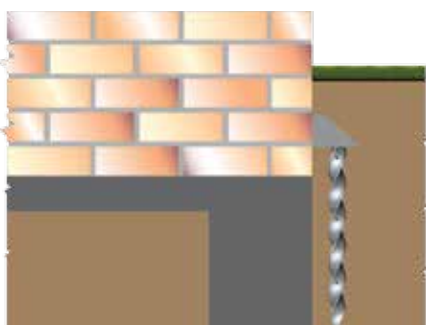
Reconnecting internal to external walls
(see crack-stitching leaflet)



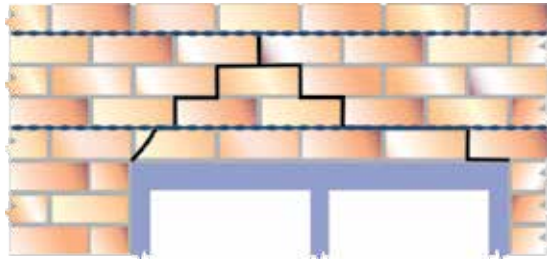
Repairing brick arch lintels
(see SureBeam leaflet)



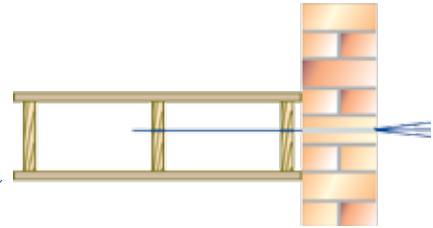
Piling (see SurePile leaflet)



Repairing failed lintels
(see SureBeam leaflet)



Stabalising bowed walls into side joists
(see heavy weight lateral restraint tie leaflet)



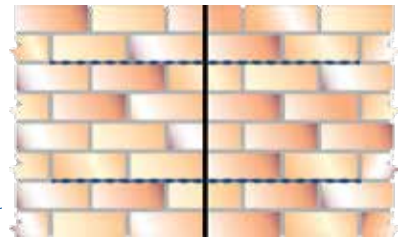
Replacing cavity wall ties
(see mechanical wall ties or
resin to resin wall ties)



Stabalising rubble walls
(see grout tie leaflet)



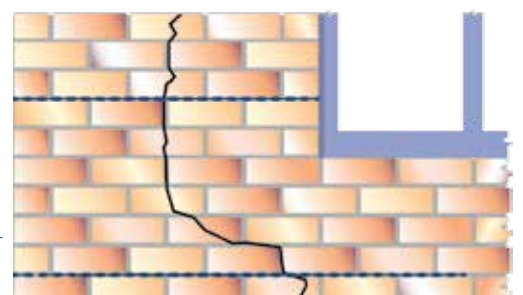
Crack-stitching (see crack stitching leaflet)



Creating masonry beams
(see SureBeam leaflet)



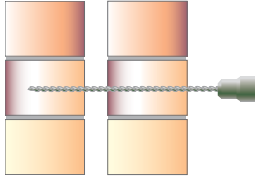
Repairing cracks near corners and openings
(see crack-stitching leaflet)



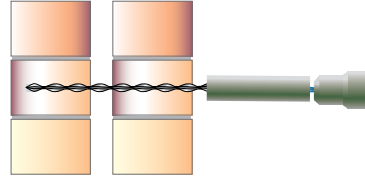
SURETWIST MECHANICAL REMEDIAL WALL TIE

Applications:

- For tying and pinning masonry to brick, block, concrete and timber



1. Drill the pilot holes through both leaves to required depth and diameter.
2. Insert the installation tool into an SDS rotary hammer drill, then place the tie into the installation tool.



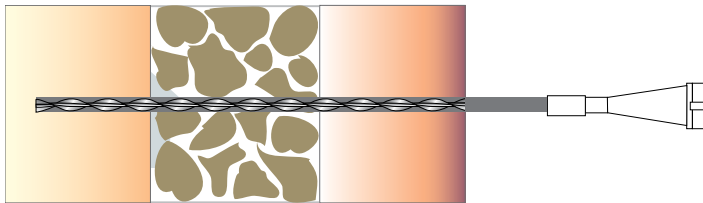
3. Drive the tie into the internal leaf to the required depth ensuring the tie is fully recessed to the external leaf below the face of the masonry.
4. Make good the tie at the surface with matching repair material.

SURETWIST GROUT TIES

A grouted remedial tie for stabilising solid and cavity masonry walls.

Applications:

- Stabilising solid or rubble walls
- Repairing delaminated brickwork
- Reconnecting separated internal and external walls

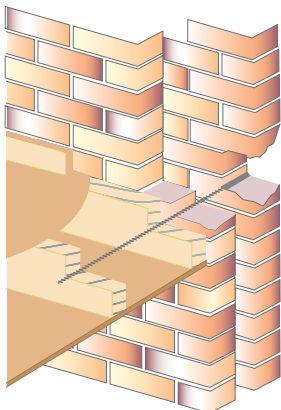


Typical Application



SURETWIST LATERAL RESTRAINT TIES

The SURETWIST Heavy Weight Lateral Restraint Wall Tie for restraining bulging walls.



Applications:

- The SURETWIST HW lateral restraint wall tie is for restraining bulging walls. Tying the wall to two or more timber side joists or studs using these 10mm diameter stainless steel ties

Benefits:

- Quick and Easy installation
- Economical to use
- 304 austenitic stainless steel
- Minimal disruption
- Prevents timber splitting

CONSTRUCTION PRODUCTS SOLUTIONS INTERNATIONAL LTD.

Unit 3, Haslemere Industrial Estate, Pig Lane, Bishop's Stortford, Hertfordshire. CM23 3HG. United Kingdom.
Tel: +44(0)1279 505 514 - Fax: +44(0)1279 755190 - e mail: info@surecps-group.com - www.surecps-group.com
Company Reg. 6969591 VAT Reg. GB 824 4246 40



Please always wear the appropriate safety and protective clothing when installing fixing and anchor products. Always observe the necessary Health & Safety guidelines.

© All text copyright. Above information is given as guidance only and should always be verified by a suitable engineer.

The above information is given in good faith, and may be subject to alteration at any time without prior notification.