



REMEDIAL CRACK-STITCHING SYSTEM BOX

The only fully certified helical crack-stitching system on the market.
A two component system consisting of stainless steel SureTwist Bar and SureGrout



Contents:

- 5 No 6mm x 1000mm SureTwist Bar
- 1 No 3 Ltr Tub of SureGrout
- 1 No Crack-Stitching Gun
- 1 No Black Plastic Nozzle
- 1 No Mixing Paddle
- 1 No Finger Trowel



Applications:

- A retro-reinforcement of bedjoint masonry
- A method of reconnecting cracked masonry

Benefits:

- SureTwist bar manufactured from 304 austenitic stainless steel, (316 available upon request)
- Non-disruptive repair method
- SureTwist bars and SureGrout provide excellent bonding characteristics within the masonry
- SureTwist Bars have a superb combination of axial strength and flexibility
- Absorbs further localised stress
- Minimises the likelihood of further cracking
- Eliminates the need to rebuild a wall
- Permanent repair
- A fast, cost effective and economical solution
- No special skills required for installation



Testing:

CE LOK 1118/A/08, ITB KATOWICE
CE 0908-BPR-SN.072.01.M-11

IFBT

Deutsches Institut für Bautechnik

DIBt

LUCIDEON

An Independent Testing Centre

University of Waterloo Ontario Canada.

Bath University.

Pennsylvania State University USA.

Imperial College London.

Ceram Building Technology.

Approvals and test centres that SureTwist Bar and Suregrout have have been tested at since 1998.



EN ISO 6892-1:2001
EN 845-1:2003
EN 846-5:2000
EN 846-7:2000
EN 998-2-2004

CONSTRUCTION PRODUCTS SOLUTIONS INTERNATIONAL LTD.

Unit 3, Haslemere Industrial Estate, Pig Lane, Bishop's Stortford, Hertfordshire. CM23 3HG. United Kingdom.
Tel: +44(0)1279 505 514 - Fax: +44(0)1279 755190 - e mail: info@surecps-group.com - www.surecps-group.com
Company Reg. 6969591 VAT Reg. GB 824 4246 40



Please always wear the appropriate safety and protective clothing when installing fixing and anchor products. Always observe the necessary Health & Safety guidelines.

© All text copyright. Above information is given as guidance only and should always be verified by a suitable engineer.

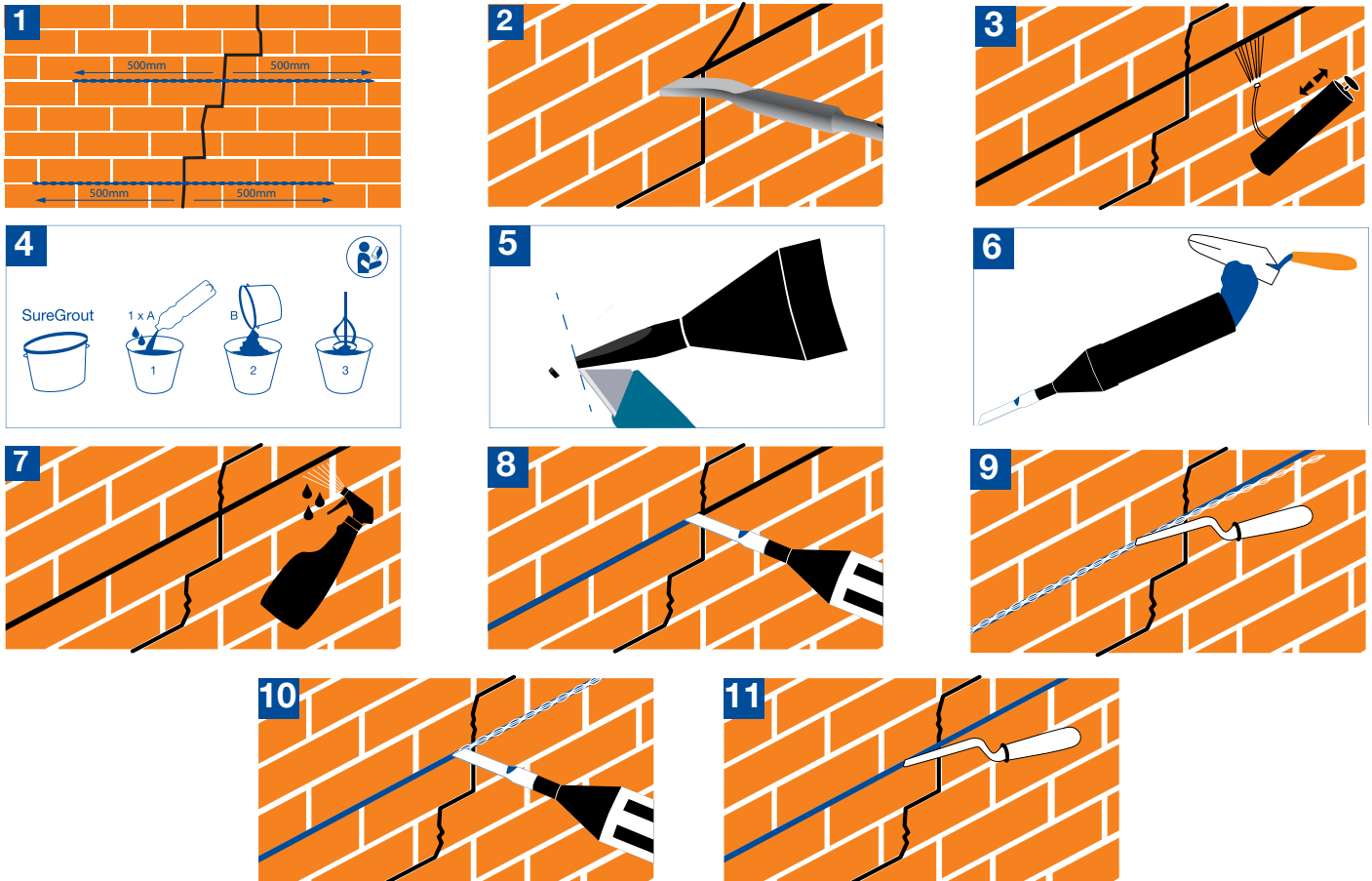
The above information is given in good faith, and may be subject to alteration at any time without prior notification.



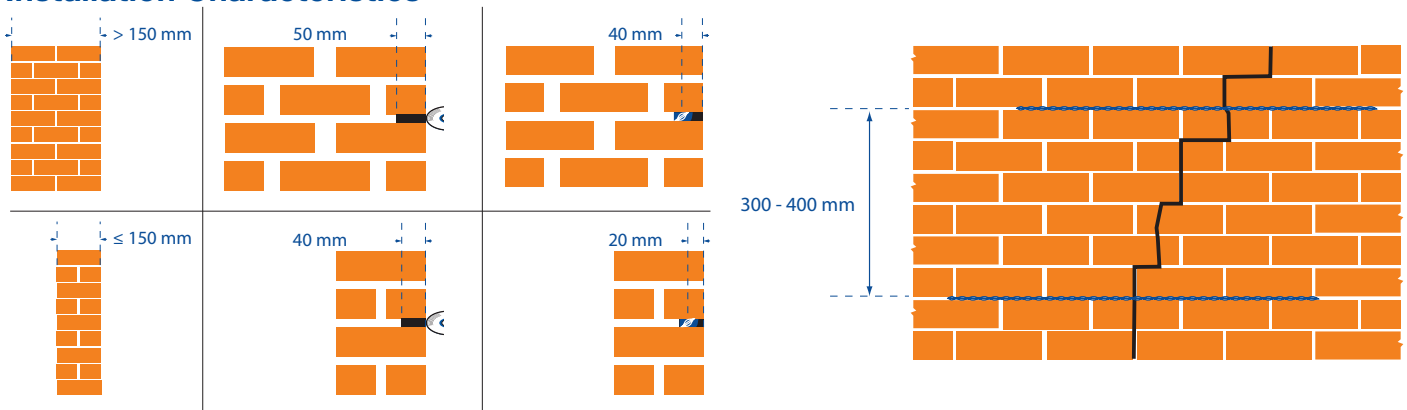
REMEDIAL CRACK-STITCHING SYSTEM BOX

The only fully certified helical crack-stitching system on the market.
A two component system consisting of stainless steel SureTwist Bar and SureGrout

Installation Details



Installation Characteristics



CONSTRUCTION PRODUCTS SOLUTIONS INTERNATIONAL LTD.

Unit 3, Haslemere Industrial Estate, Pig Lane, Bishop's Stortford, Hertfordshire. CM23 3HG. United Kingdom.
Tel: +44(0)1279 505 514 - Fax: +44(0)1279 755190 - e mail: info@surecps-group.com - www.surecps-group.com
Company Reg. 6969591 VAT Reg. GB 824 4246 40



Please always wear the appropriate safety and protective clothing when installing fixing and anchor products. Always observe the necessary Health & Safety guidelines.

© All text copyright. Above information is given as guidance only and should always be verified by a suitable engineer.

The above information is given in good faith, and may be subject to alteration at any time without prior notification.